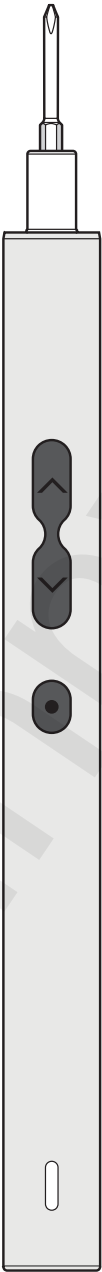
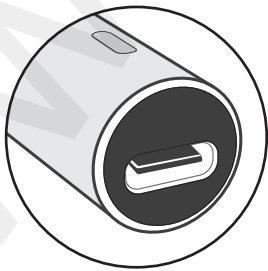
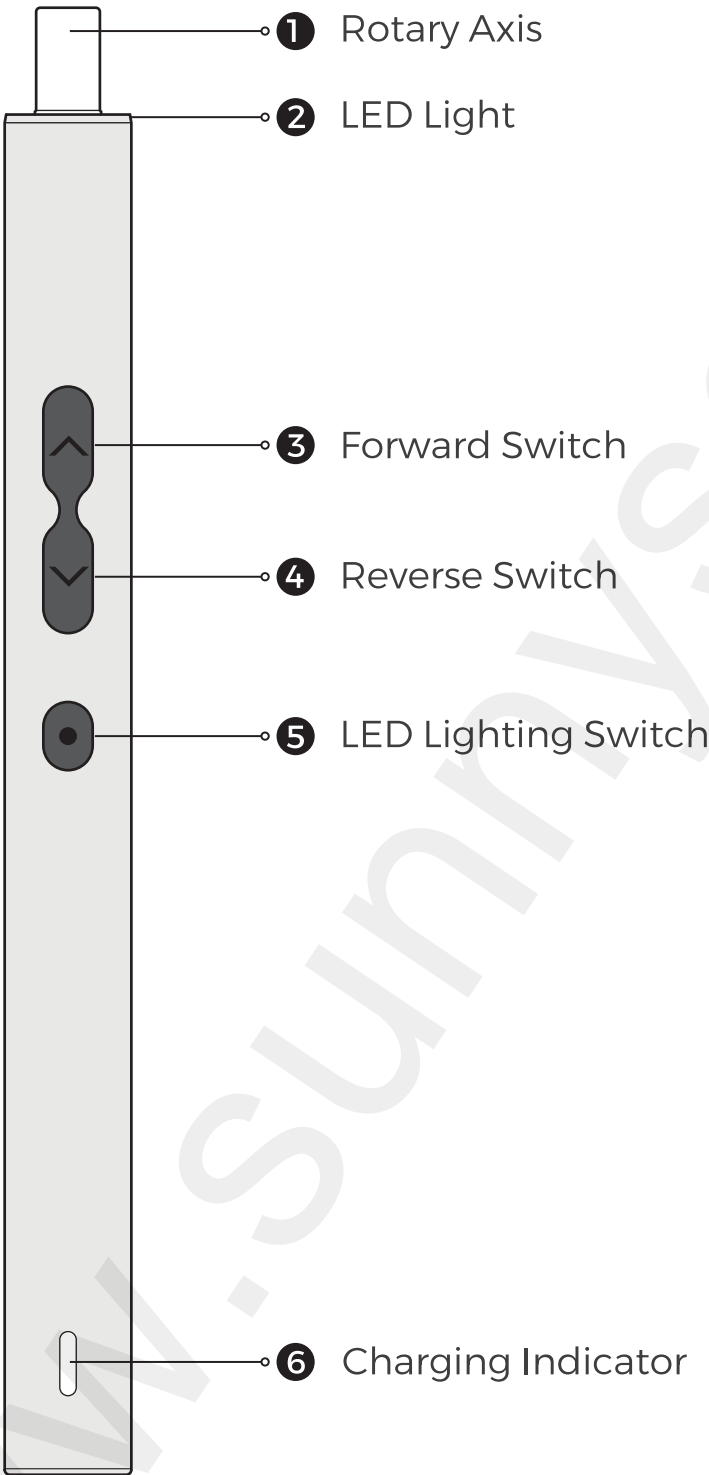


**PRECISION
ELECTRIC SCREWDRIVER
SET**

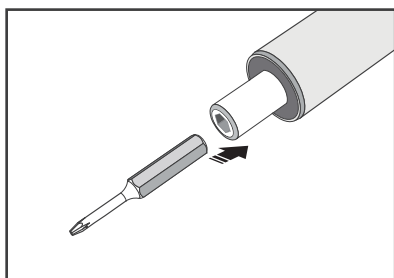


Part Description

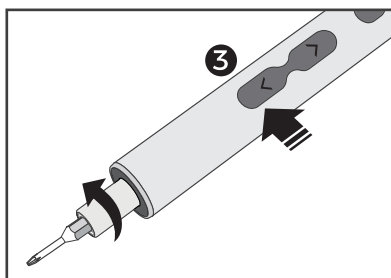


⑦ USB Charging Port

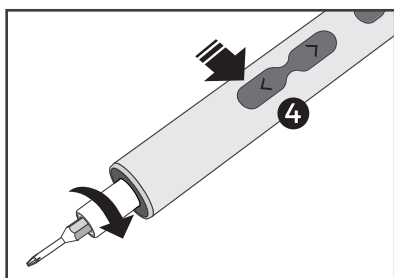
Using Steps



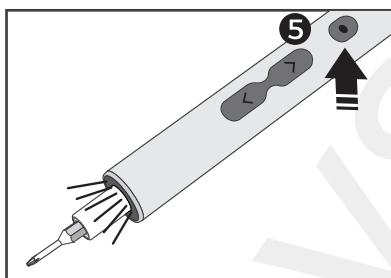
1. Put the bit out from the storage case and into the rotary axis.



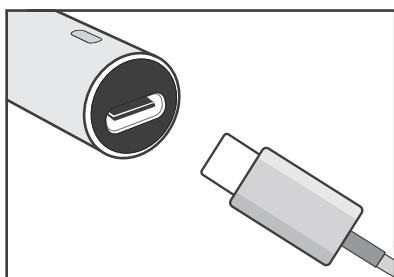
2. Press **3**, tighten the screws.



3. Press **4**, loosen the screws.



4. Press **5**, turn on the light, Press again, turn off the light.



5. There is a Type-C USB charging port at the end of the screwdriver.

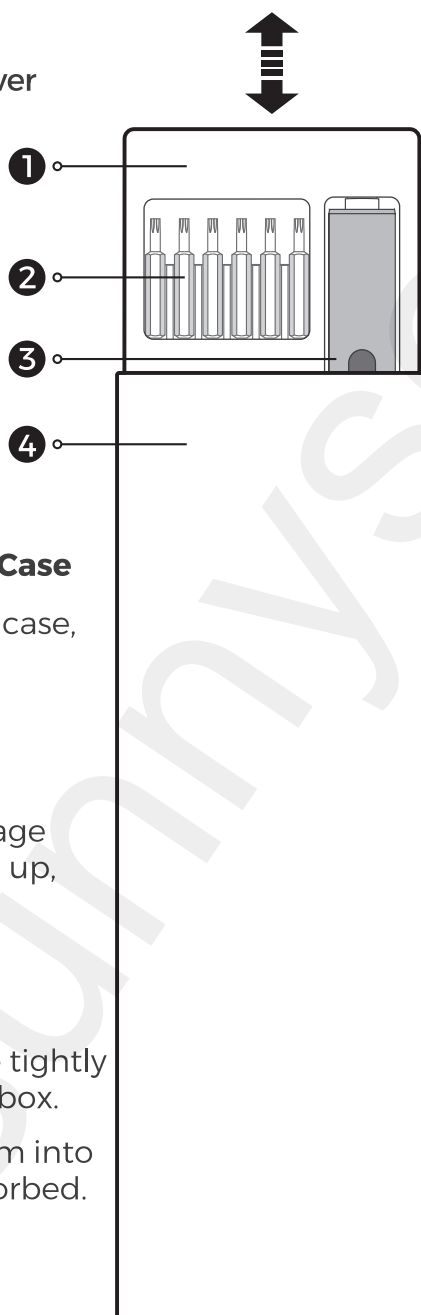
Charging Instruction

When using the Type-C USB charging port, the charging indicator shows white means "charging", shows green means "full charge".

1. Please charge the screwdriver fully and the charging time is no more than 2.5 hours before when the screwdriver the first time.
2. Please charge the screwdriver at lease once a month to maintain a good performance.
3. Only charge the screwdriver by using the provided charging cable.

Storage Case

- ❶ Internal box
- ❷ Bits
- ❸ Electric Precision Screwdriver
- ❹ Storage Shell



Open and Close the Storage Case

- Press the top of the storage case, opened.
- Press again, closed.

Note:

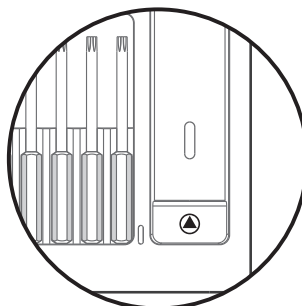
After press the top of the storage case, the inner box will be pop up, the inner can is easy to slip off.

Bits Storage

- All the bits are kept in place tightly for the magnetism internal box.
- After using the bits, put them into the bit slot, they will be absorbed.

Storage of the electric precision screwdriver

- The electric precision screwdriver is snapped into the internal box, take out according to the ▲ indication.
- After using, put it back into place.



Product Specification

Battery Type: Li Battery

Battery Capacity: 350mAh

Voltage: 3.7V-DC

Electric Torque: 0.25-0.35N.m

Manual Torque: 3Nm

Free Speed: 200r/min

Charging Time: <70mins

Size of Screwdriver: 180X Φ 15.8

Net Weight of Screwdriver: 54g

Bits Specification

Bits Size: H4x45mm

Material: S2 Steel

⊛ T8H, T10H, T15H, T20H

⊕ PH0, PH1

⊙ H1.5, H2.0, H2.5

⊖ SL2.0

Ⓢ U2.6

⬆ 3.0

Bits Size: H4x28mm

Material: S2 Steel

⊖ SL1.0, SL1.5, SL2.5, SL3.0, SL3.5, SL4.0

⊛ T2, T3, T4

⊛ T5H, T6H, T7H, T9H

⊙ H0.7, H0.9, H1.3, H3.0, H3.5, H4.0

Ⓢ Y0.6, Y1, Y2.0, Y2.5

⊕ PH000, PH00

⊕ W1.5

⊛ P2, P5, P6

Ⓢ U3.0

⬤ SQ0, SQ1

⊕ PH2

⬆ 2.0, 2.3

⬤ SIM

Safety Warm Tip



Warning! Please read all the provided safety warm tips, specifications, pictures and provision.

Electrical Safety

1. Please charge the screwdriver by using the provided harging accessories, don't use others, for reduce the risk when charging.
2. Please don't put screwdriver expose under the sun or in the wet situation.
3. If you can't avoid putting the screwdriver in the wet situation, please wear the silicone sleeves to reduce risk.
4. If using the electric screwdriver in the electrostatic environment, install an electrostatic ring to demagnetize the driver bits to reduce operation accidents.

Personal Safety



1. There is a little dangerous of the electric screwdriver, please do not let the babies or children use it to avoid injury.
2. Please don't put it in the pockets or bags to avoid operate the electric screwdriver accidentally causing injury.
3. When operating the electric screwdriver, the holding height could not be too high or too low ensure that the electric screwdriver can be controlled under other external force.

Using Precaution

1. When using the electric screwdriver to remove screws, please use the manual mode to loosen the screws avoid destroy screws and other parts at screws.
2. When not using the electric screwdriver, please put it out of the reach of the children.
3. If the product falls into the water or splashes into the machine, please stop using it to avoid short circuit.
4. When maintain the electric screwdriver, please check the smoothness of the screwdriver head rotation, whether other parts are damaged, etc. If there are some damages, please repair it before using. Using the damaged electric screwdriver may cause accident.
5. When the fastener or the hidden wire operation may be touched, the electric screwdriver should be held by the holding surface of the insulator.

6. Don't disassemble this product.
7. Please follow the instructions.

Maintenance

1. Ask professional maintenance staffs to use the same spare parts to repair the electric screwdriver. This will ensure the safety of the electric screwdriver being repaired.
2. Never repair the damaged battery pack. The battery pack just could be repaired by the producer or the authorized service providers.

Built-in battery safety warning

1. Don't disassemble, open or shred tools.
2. Don't put the electric screwdriver expose to the heat or flame. Avoid keep it under direct sunlight.
3. Don't short-circuit the exposed terminals. Don't put several tools in a box or drawer to avoid short-circuiting between them or being short-circuited by other metal objects.
4. Once the battery expose, don't make the leaked liquid touch your skin or eyes. If touch, wash the touched part with plenty of water and then go to the hospital in time.
5. Don't use non-specified adapters.
6. Don't use non-device-specific batteries.
7. Keep the tool clean and dry.
8. If the charging port is dirty, please use the dry cloth to wipe.
9. Please charge the electric screwdriver before using. You should use the correct charger to charge and refer to the manufacturer's instructions or the correct instructions in the manual.
10. Please don't charge the tools for a long time.
11. After a long-term storage, the tool needs to be charged and discharged several times to obtain the best performance.
12. Using at the normal temperature: $20^{\circ}\text{C} \pm 5^{\circ}\text{C}$, the battery has the best performance.
13. Correct battery disposal.